

ThermoTestSM

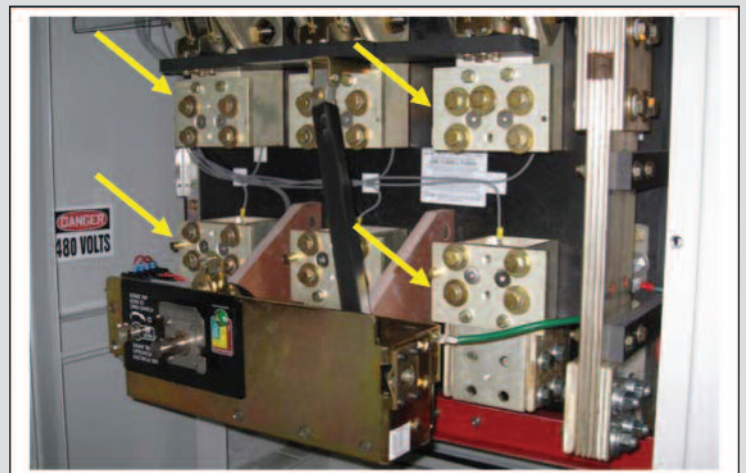
Toll Free 800-897-4212 • E-mail: gscollan@thermotest.com

TRANSPORTABLE RAPID DEPLOYMENT SWITCHGEAR SOLUTION



Large Lockable Transport Wheels

- Transportable Switch for *Rapid Deployment & Immediate Availability* during electrical emergencies and crisis.
- Temporary Power Solution
- Fusible from 1200 to 4000 Amps
- 3Ø Meter for direct measurement of load; Modbus and DNP for BMS. Multi measurements 3Ø voltage, current, PF, Unbalance, Min/Max values, THD, KWh, Demand, etc.
- Visual access port, switch status without disturbing opening/closing handle.
- Small dimensional footprint allows movement via freight elevators and standard 36" doors. Quickly and easily rolled into switchgear room or any other facility location.
- Flexible solution during emergency and/or unforeseen conditions.

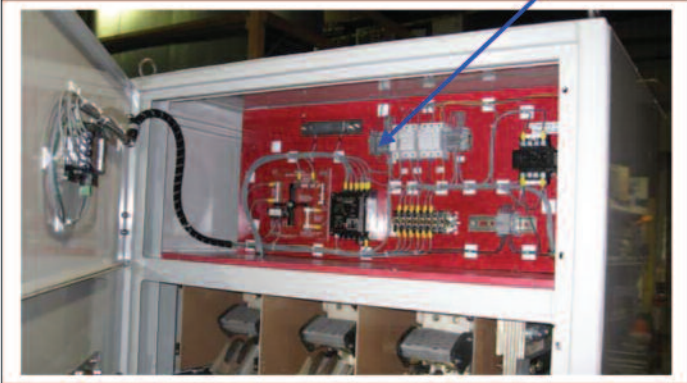


Custom Fuse Bus fusible from 1200 to 4000 Amp

TRANSPORTABLE RAPID DEPLOYMENT SWITCHGEAR SOLUTION

Design upgrade, electronics segregated from main switch compartment for security during faults. Mounted on non-conductive Bakelite .

Single Phase & Ground Fault Protection



- Ground Fault Protection (Switchable)
- Single Phase Protection (Switchable)
- Welded I Beam Rigid Construction for structural integrity during transport.
- Lifting Hooks for easy lifting on to a transport vehicle
- Lockable Wheels
- Silver Plated Bus for cable/lug connections.
- Custom; Site Specific Distribution Panels
- Service Contact
- Fuse & Cam Lock® Cable Kits



I-Beam Welded Frame for structural integrity.

ThermoTestSM

P.O. Box 600 • Fishkill, NY 12524

Toll Free 800-897-4212 • Fax 845-897-4258 Fax

E-mail: gscollan@thermotest.com • www.thermotest.com